

Cariology in Older Adults: Insights and Challenges

Keynote Address



Dental Caries in Aging Populations: Linking Research to Chronic Disease Prevention

Joana Cunha-Cruz, DDS, PhD
Professor, Clinical & Community Sciences
University of Alabama at Birmingham

Welcome Dr. Eliav and Dr. Kopycka-Kedzierawski

Eli Eliav, DMD, MSc, PhD
Director, Eastman Institute for Oral Health



Dorota T. Kopycka-Kedzierawski DDS, MPH
Director, EIOH Clinical and Translational Research Core



Learning Objectives:

Describe the unique challenges of diagnosing, preventing and managing dental caries in older adults; Explain how age-friendly care models can be integrated successfully into dental practice; Discuss the role of salivary gland physiology related to caries risk; Analyze interactions between diet, nutrition, chronic diseases and apply to prevention.

Education Objectives:

Develop individualized caries management plans; Communicate effectively to promote shared decision making and coordinated care; Implement preventive interventions and strategies for medically complex adults.

Cariology Conference
April 17, 2026 8:00AM-4:00PM
University Advancement Auditorium

Registration Fees:

Dentist	\$100
Resident/Student	\$100
Auxiliary/Technician	\$100

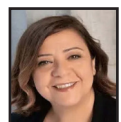
Age-Friendly Oral Health Care: Integrating Geriatric Principles Across Disciplines

Thomas V. Caprio, MD
Dept. of Medicine, Geriatrics/Aging; University of Rochester Medical Center



Caries and Beyond: Tooth Loss and the Rehabilitation of Aging Smiles

Elham Emami, DMD, PhD
Dean, McGill University's Dental Medicine and Oral Health Sciences



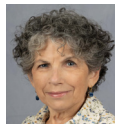
The Impact of Aging and Salivary Function on Dental Caries Risk

Szilvia Arany, DMD, PhD, MSBA
Director, EIOH Geriatric Dental Clinic



Beyond the Sugar: The Multifactorial Associations Between Diet, Nutrition, and Oral Health in Older Adults

Riva Touger-Decker PhD, RD, CDN, FADA
Professor Emeritus; School of Health Professions; Rutgers School of Dental Medicine



To register please visit this website or scan the QR code:

<https://www.urmc.rochester.edu/dentistry/education/continuing-education/cariology-conference>



For questions please contact Maria Karvounidis at 585.275.4954 or email: maria_karvounidis@urmc.rochester.edu

University of Rochester, Eastman Institute for Oral Health, designates this activity for 5.5 continuing education credits.

ADA CERP is a service of the American Dental Association to assist dental professionals in identifying quality providers of continuing dental education. ADA CERP does not approve or endorse individual courses or instructors, nor does it imply acceptance of credit hours by boards of dentistry. Concerns or complaints about a CE provider may be directed to the provider or to the Commission for Continuing Education Provider Recognition at ADA.org/CERP.



University Advancement, 300 East River Road,
Rochester NY 14627